

スカイAカップ 2025プロボウリング レディース 新人戦

レーンコンディションパターン

【JPBAレジェンドシリーズ SUGIMOTO Katsuko 2025パターン(43ft)】

※下記パターンを参考に、会場センターにてレーンメンテナンスを行います

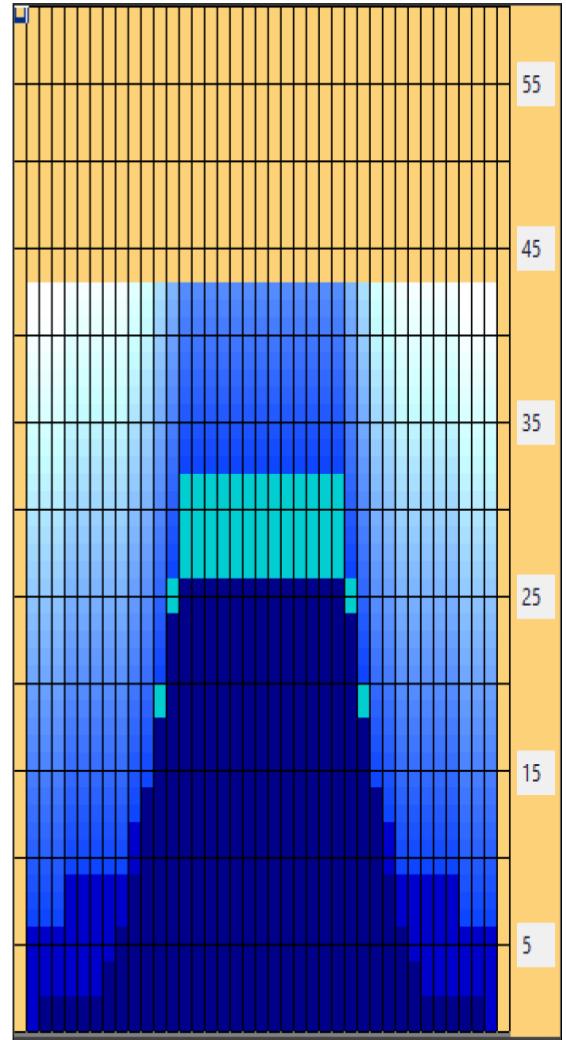
Oil Pattern Distance:	43 Feet	Reverse Brush Drop:	25 Feet	Oil Per Board:	50 uL
Forward Oil Total:	15.1 mL	Reverse Oil Total:	12.8 mL	Volume Oil Total:	27.9 mL
Forward Boards Crossed:	302 Boards	Reverse Boards Crossed:	256 Boards	Total Boards Crossed:	558 Boards

	Start	Stop	Loads	Mics	Speed	Crossed	Start	End	Feet	T.Oil
1	3L	3R	3	50	10	105	0.0	2.8	2.8	5250
2	8L	8R	1	50	14	25	2.8	4.7	1.9	1250
3	9L	9R	1	50	14	23	4.7	6.6	1.9	1150
4	10L	10R	1	50	18	21	6.6	9.1	2.5	1050
5	11L	11R	2	50	18	38	9.1	14.2	5.1	1900
6	12L	12R	2	50	22	34	14.2	20.4	6.2	1700
7	13L	13R	2	50	22	30	20.4	26.6	6.2	1500
8	14L	14R	2	50	22	26	26.6	32.8	6.2	1300
9	2L	2R	0	50	26	0	32.8	36.0	3.2	0
10	2L	2R	0	50	30	0	36.0	43.0	7.0	0

Conditioner:
Type In or Select One

Forward
Reverse
Combined
Buff

	Start	Stop	Loads	Mics	Speed	Crossed	Start	End	Feet	T.Oil
1	2L	2R	0	40	30	0	43.0	26.0	-17.0	0
2	14L	14R	1	50	18	13	26.0	23.5	-2.5	650
3	13L	13R	2	50	18	30	23.5	18.4	-5.1	1500
4	12L	12R	2	50	14	34	18.4	14.5	-3.9	1700
5	11L	11R	2	50	10	38	14.5	11.7	-2.8	1900
6	10L	10R	2	50	10	42	11.7	8.9	-2.8	2100
7	5L	5R	2	50	10	62	8.9	6.1	-2.8	3100
8	2L	2R	1	50	10	37	6.1	4.7	-1.4	1850
9	2L	2R	0	50	10	0	4.7	0.0	-4.7	0



Item	3L-7L:18L-18R	8L-12L:18L-18R	13L-17L:18L-18R	18L-18R:17R-13R	18L-18R:12R-8R	18L-18R:7R-3R
Description	Outside Track:Middle	Middle Track:Middle	Inside Track:Middle	Middle: Inside Track	Middle:Middle Track	Middle:Outside Track
Track Zone Ratio	5	2.17	1.02	1.02	2.17	5

