



JPBA レジェンドパターン (SAKAI Takeo 2025)

※下記パターンを参考にトーナメント委員会指導の下、会場センターにてレーンメンテナンスを行います。

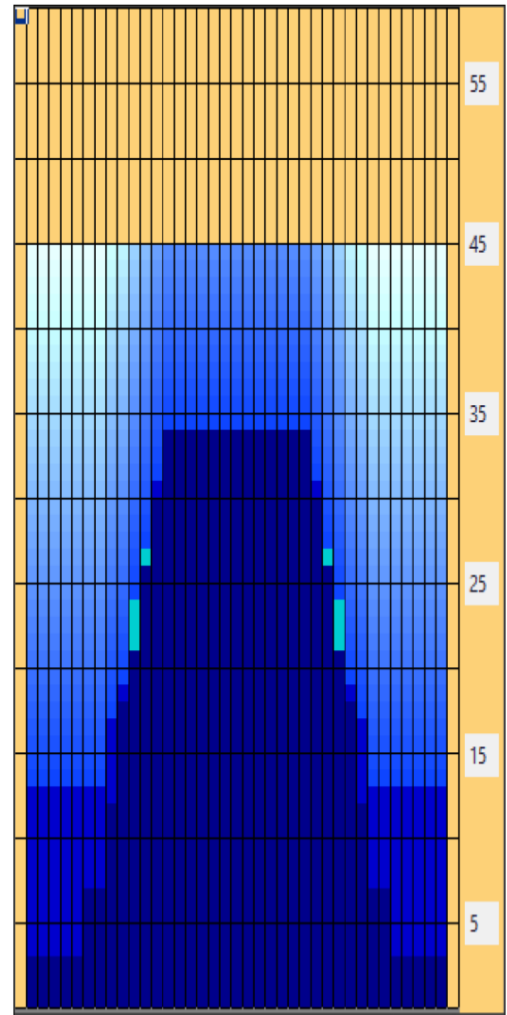
Oil Pattern Distance:	45 Feet	Reverse Brush Drop:	34 Feet	Oil Per Board:	50 uL
Forward Oil Total:	16.8 mL	Reverse Oil Total:	13.7 mL	Volume Oil Total:	30.5 mL
Forward Boards Crossed:	336 Boards	Reverse Boards Crossed:	274 Boards	Total Boards Crossed:	610 Boards

	Start	Stop	Loads	Mics	Speed	Crossed	Start	End	Feet	T.Oil
1	2L	2R	3	50	14	111	0.0	3.9	3.9	5550
2	7L	7R	2	50	14	54	3.9	7.8	3.9	2700
3	9L	9R	2	50	18	46	7.8	12.9	5.1	2300
4	10L	10R	2	50	18	42	12.9	18.0	5.1	2100
5	11L	11R	2	50	22	38	18.0	24.2	6.2	1900
6	12L	12R	1	50	22	17	24.2	27.3	3.1	850
7	13L	13R	1	50	22	15	27.3	30.4	3.1	750
8	14L	14R	1	50	26	13	30.4	34.0	3.6	650
9	2L	2R	0	50	30	0	34.0	45.0	11.0	0

Conditioner:
Type In or Select
One

Forward
Reverse
Combined
Buff

	Start	Stop	Loads	Mics	Speed	Crossed	Start	End	Feet	T.Oil
1	2L	2R	0	40	30	0	45.0	34.0	-11.0	0
2	14L	14R	1	50	22	13	34.0	30.9	-3.1	650
3	13L	13R	2	50	18	30	30.9	25.8	-5.1	1500
4	12L	12R	2	50	18	34	25.8	20.7	-5.1	1700
5	11L	11R	1	50	14	19	20.7	18.8	-1.9	950
6	10L	10R	1	50	14	21	18.8	16.9	-1.9	1050
7	9L	9R	2	50	14	46	16.9	13.0	-3.9	2300
8	2L	2R	3	50	14	111	13.0	7.1	-5.9	5550
9	2L	2R	0	50	14	0	7.1	0.0	-7.1	0



Item	3L-7L:18L-18R	8L-12L:18L-18R	13L-17L:18L-18R	18L-18R:17R-13R	18L-18R:12R-8R	18L-18R:7R-3R
Description	Outside Track:Middle	Middle Track:Middle	Inside Track:Middle	Middle: Inside Track	Middle:Middle Track	Middle:Outside Track
Track Zone Ratio	4.06	1.76	1.02	1.02	1.76	4.06

